

Wright & Morten Equine Newsletter



www.wmvets.co.uk

July 2018

Laminitis – A Painful Condition

With the grass growing and the number of cases on the rise throughout the summer, we felt it was time to give you a laminitis update.

Laminitis is inflammation of the sensitive layers of the hoof, known as the 'laminae' resulting in pain, inflammation and, in some cases, permanent damage to the laminae. The laminae help hold the pedal bone in place. When they become permanently damaged there is a separation of the pedal bone from the laminae which results in sinking and rotation of the pedal bone. This is a very painful.

There are many causes of laminitis, the most common causes are:

- **Carbohydrate overload** – Excess hard feed and/or grass.
- **Equine Metabolic Syndrome** - Usually seen in overweight middle-aged native ponies in which the fat stores become metabolically active and result in insulin resistance and recurrent episodes of laminitis.
- **Equine Cushing's Disease** - A disease of older horses and ponies in which an overgrowth of the pituitary gland results in overproduction of hormones that are thought to be responsible for the recurrent episodes of laminitis seen in sufferers.

Laminitis is characterised by lameness involving one or more feet which is often rapid in onset. Most often both front feet are affected, but hind feet can be involved as well.

Affected horses show a characteristic, potterly gait landing with the heel first. When at rest, most stand with their hind limbs under their body whilst leaning back to take the weight off their front feet. Generally digital pulses can be felt and most will also show a painful response to hoof testers.

Diagnosis of laminitis is made by clinical examination, blood tests and radiographs to formulate a treatment plan, which often involves working with your farrier.

Laminitis Radiography Package

Radiographs are a vital part of your horse's diagnosis and treatment. Regular radiographs are required to monitor your horse's laminitis as well as to support your farrier with the ongoing trimming and shoeing of your horse.

We endeavour to offer our clients and patients the best possible professional help but we also appreciate this comes at a cost. We are pleased to announce that we will be running a special offer over the summer period of a '**Laminitis Radiograph Package**' this discounted package entitles the client to:

- A Consultation (On farm)
- Up to 4 Radiographs for £150 inc. VAT
- Up to 8 Radiographs for £250 inc. VAT

Please note prices exclude visit fee and sedation (if required)



Upcoming Gastroscopy Clinic!

Wednesday 3rd July and Tuesday 17th July 2018

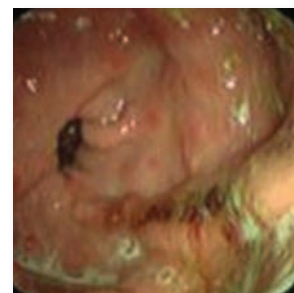
- Does your horse have unexplained weight loss or struggle maintaining weight?
- Is he or she unhappy about being tacked up (especially girthing) or having belly straps done up on their rug?
- Is their coat a bit dull?
- Are they showing abnormal behavioural issues when being ridden e.g. lots of tail swishing, crabbing, bucking/napping?

Have you thought about the possibility that they may have gastric ulcers?

In July we are running a gastroscopy clinic which includes one week of free treatment for any horse diagnosed with ulcers. We are aiming that the timing of this clinic will help horses be picked up during times of increased work load and athletic function so that we can optimise their health care and comfort. This in turn helps obtain better results from a pleasure riding and competitive riding perspective.

What is gastroscopy?

Gastroscopy is the diagnostic test that involves passing a flexible camera down the horse's oesophagus via their nose and into the stomach. This allows us to see the inside of the horse's stomach and look for any signs of ulcers.



- ✓ Horses are sedated to reduce anxiety and stress and ease camera passage.
- ✓ Takes around 15 – 20 minutes.
- ✓ Not painful.

What are the advantages of gastroscopy?

Gastroscopy is the only diagnostic test available that is definitive for equine gastric ulcers.

- ✓ Reliable and straightforward test.
- ✓ Distinguish between squamous and glandular ulcers.

It is important to identify the location of the ulcers as the recommended management and treatment is dependent on the location and severity.

Take advantage of our gastroscopy clinic offer! To book your horse in today please phone us on 08458 330034.

Kindly sponsored by Boehringer Ingelheim.



Wright & Morten Strategic Worming Plan

The advice and best practice approach to worming our horses has evolved over the years, as our knowledge has developed, and more clinical evidence and technologies have come to the fore. We also know that worming advice can be complex and often contradictory.



To assist our clients in this potentially confusing yet essential element of caring for our horses, we have designed a Strategic Worming Plan based on what we believe is current best practice.

The cornerstones of our plan are to:

- ✓ Avoid over worming our horses with chemicals they don't need,
- ✓ Create a plan that monitors and treats high worm burdens as necessary,
- ✓ Provide our patients with best practice solutions for great preventative healthcare.

We have designed our Strategic Worming Plan with the following thoughts in mind:

- Over worming has become such an issue that worms are now resistant to many commonly used wormers. So, our plan is based around worm egg count testing. You only worm if your horse has a high worm burden.
- It's still important to worm over the winter with a wormer that targets small redworm that live in a horse's guts over the colder months.
- It's important to target tapeworm strategically. So, our program treats tapeworm once a year in the winter. And, we also test for tapeworm with the Equisal Saliva test in the Spring / Summer months.

- It needs to be affordable. So, our plan will provide your horse with a free wormer if his worm egg count is too high.

Our Strategic Plan

Our plan will be tailored differently for everyone's individual circumstances, but is based on the following yearly calendar template:

Month	November - January
Strategy	Worm with Equest Pramox
Target	Encysted small redworms and tapeworm
Month	May
Strategy	Worm egg count
Target	Large roundworms
Month	May - July
Strategy	Equisal saliva test
Target	Tapeworm
Month	July
Strategy	Worm egg count
Target	Large roundworms
Month	September
Strategy	Worm egg count
Target	Large roundworms

How it works

Once you sign up to our Worming Plan, you will get a call from one of our Equine nurses who have trained as SQPs (Suitably Qualified Persons, to deliver worming advice and prescribe wormers) to discuss your horse's individual yard circumstances and to help tailor a plan that suits yourselves. Please weight your horse. The easiest way is with a weigh tape.



After this we will send you a pack with a year's supply of consumables. This will include your winter wormer, sample containers for the worm egg counts and tapeworm tests as well as gloves, plastic bags, submission forms and pre-paid envelopes. All you then need to do is post back your horse's faecal samples to our Freepost address at Somerford

Park Farm at the correct strategic time of year. Between May and July you would send the Equisal saliva test to an external laboratory with the provided envelope.

Once we have analysed the samples, we will call you with the results. You will receive worming advice based on your own individual circumstances from one of our vets or nurses.

The price for your yearly Worming Plan is £84 for all horses under 700kg in weight, with a 10% discount for subsequent horses owned by the same person. **We will provide additional round wormers free of charge on this plan.** There is a £25 supplement for horses over 700kg.

Worm egg counts

We use standard Macmaster lab tests to identify worm eggs within your horse's droppings. This is the best method to detect large roundworm eggs. It doesn't detect pinworms, tapeworms or small redworms. We ask you to send us your horse's droppings to our lab and we will call you once the sample has been analysed.

FARM AND EQUINE

The Barn, Holly Tree Farm,
Holmes Chapel Road
Lower Withington, Macclesfield,
Cheshire, SK11 9DT

Tel: 08458 330034 or 01477 571000

Email: hollytree@wmvets.co.uk

